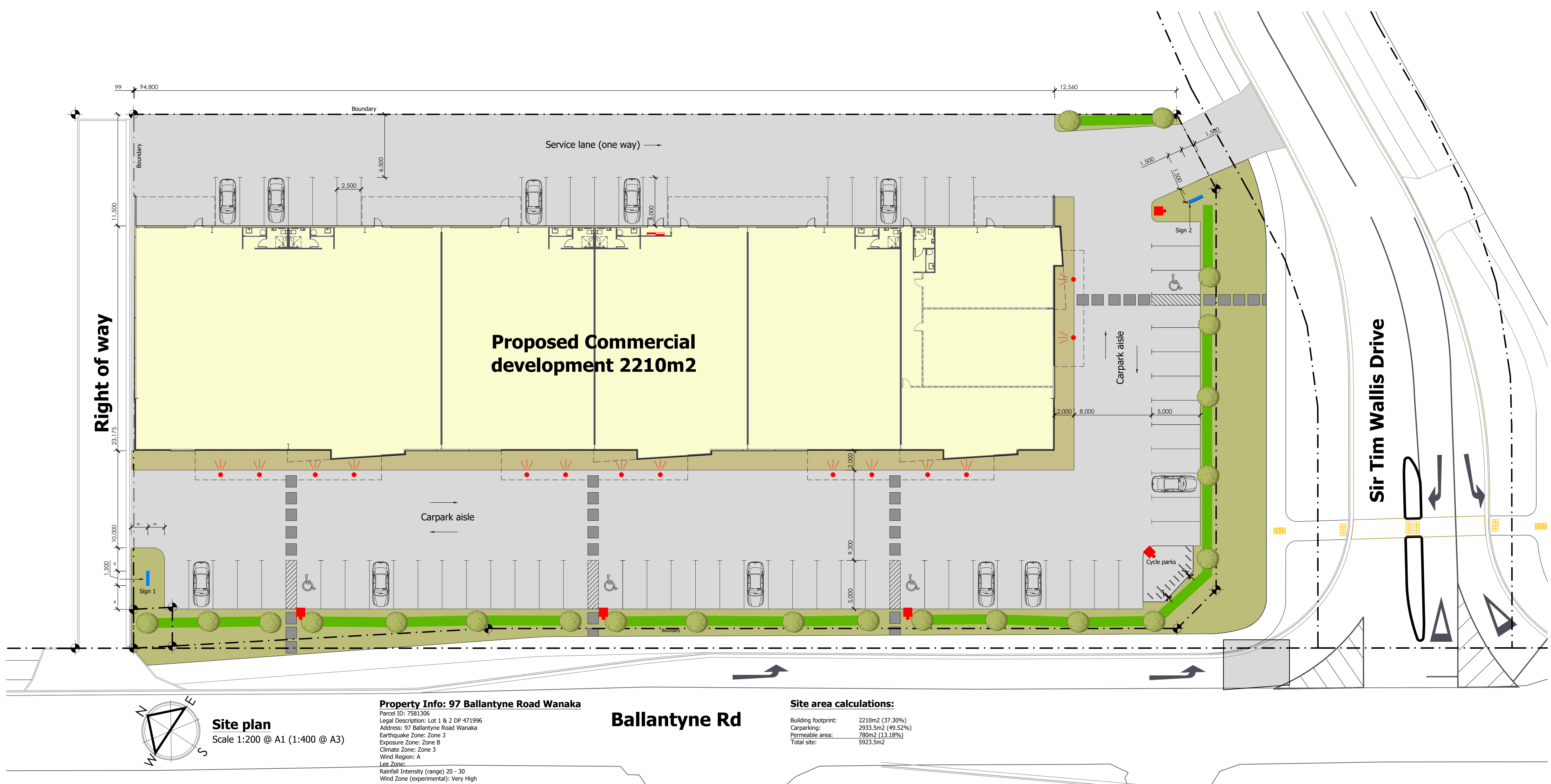




View from Ballantyne Road



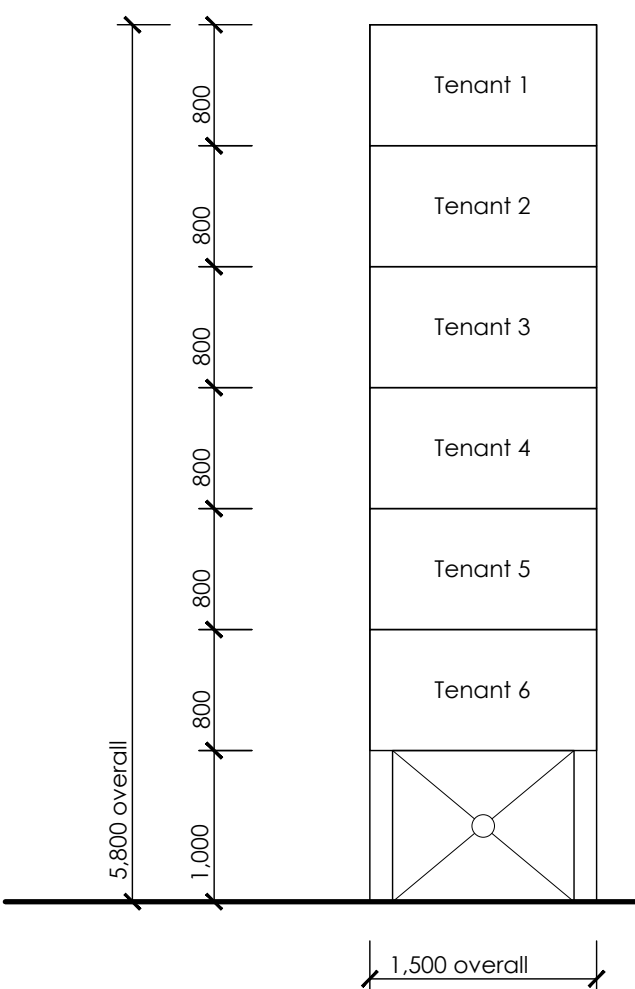
View from Sir Tim Wallis Drive



- Planting key:**
- Prunus shimidzu sakura (Flowering Cherry) - 34 No.
 - 1.000m high griselinia littoralis hedge (480) NZ Broadleaf. At 1.000m centres
 - Ground cover (75mm schist chip)

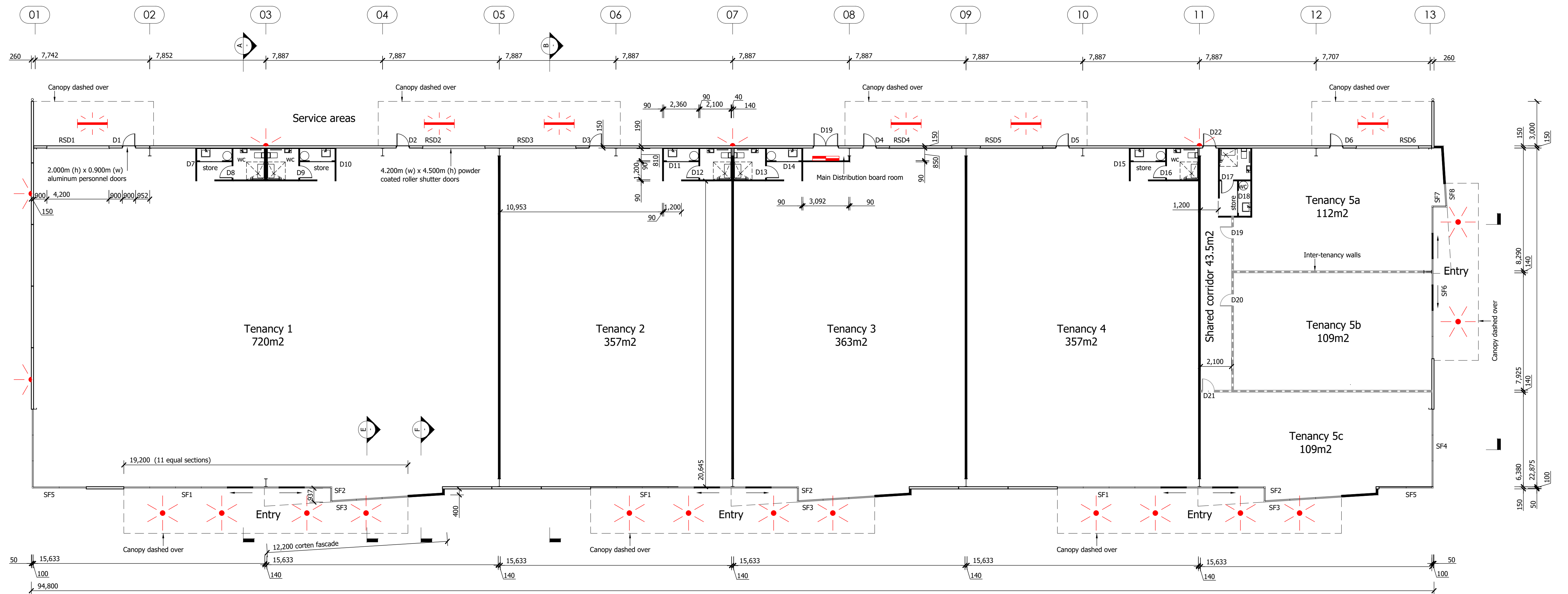
- Notes to planting:**
- Prepare all garden beds with 350mm deep topsoil.
 - Prepare tree pits 1.000 x 1.000 x 1.000m deep and backfill with topsoil.
 - Provide weed matting to all planted areas, and cover with 75mm schist chip.

- Lighting key:**
- XSP Series - IP66 LED Parking & roadway down lighting (on daylight switch)
 - LED Sign spots above canopy (on daylight switch)

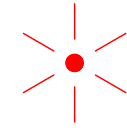




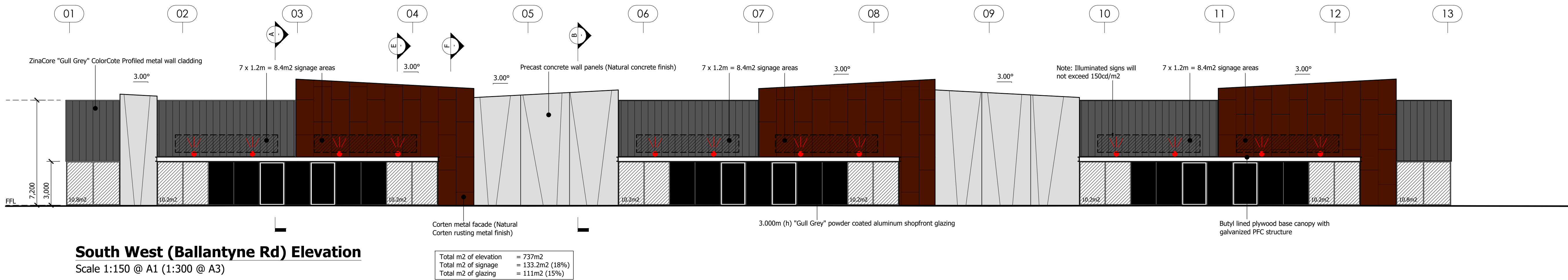
Note: Illuminated signs will not exceed 150cd/m²

Site Sign 1 & 2 (Double sided)
Scale 1:50 @ A1 (1:100 @ A3)

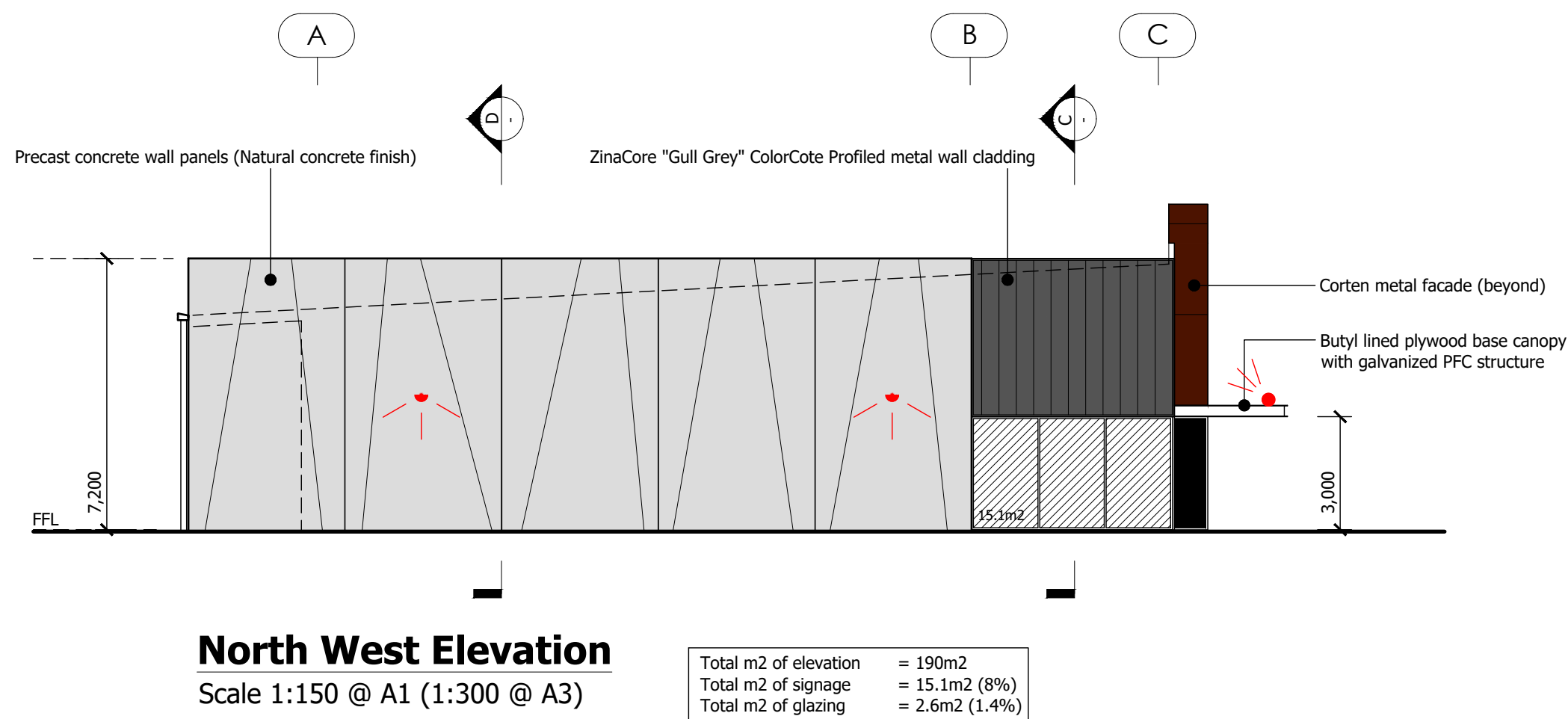


Floor plan 2210m2
Scale 1:150 @ A1 (1:300 @ A3)

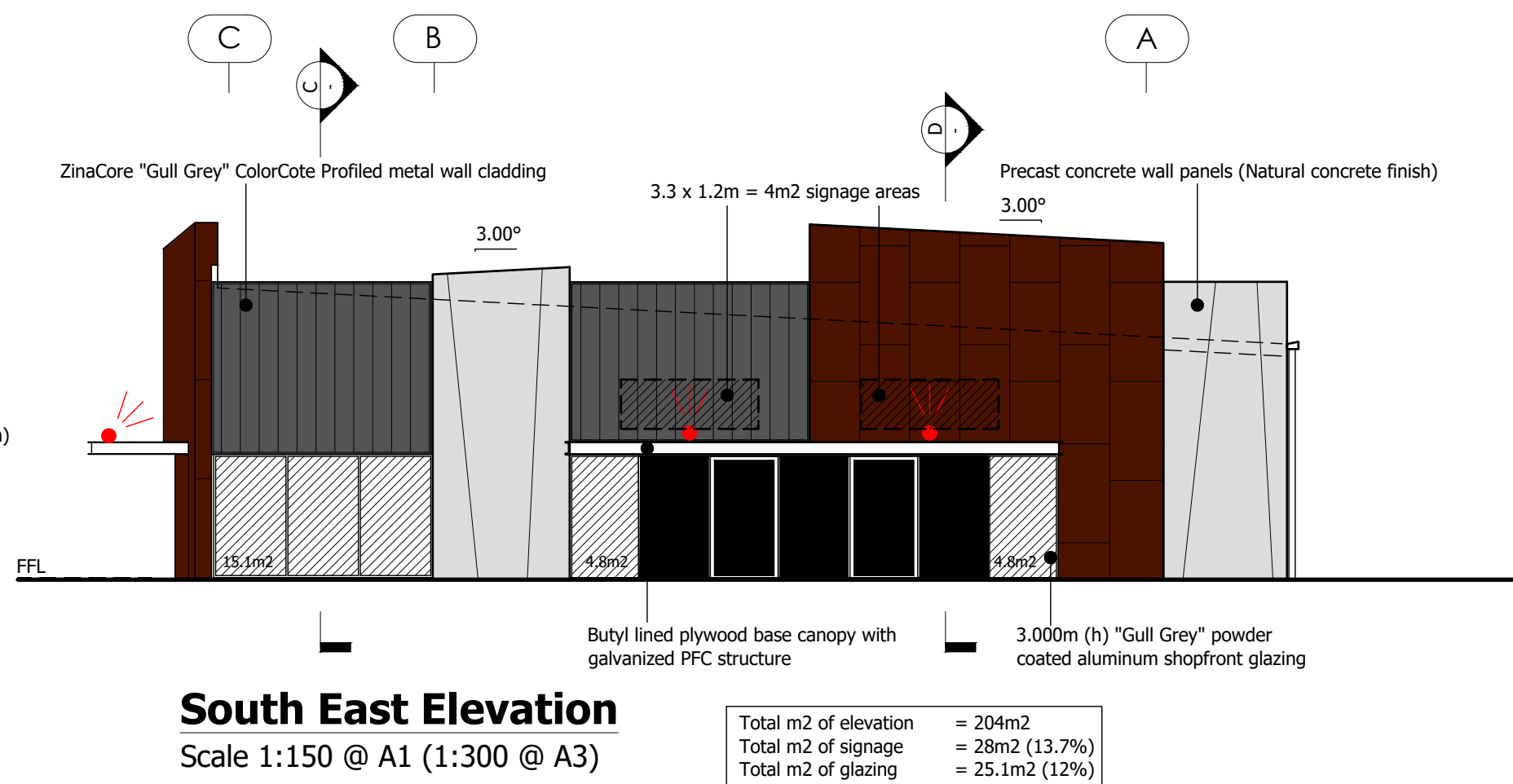
- Lighting key:**
-  LED recessed downlights in canopy (on daylight switch)
 -  LED Bulkhead lights (on daylight switch)
 -  LED Strip light to underside of canopies (on daylight switch)



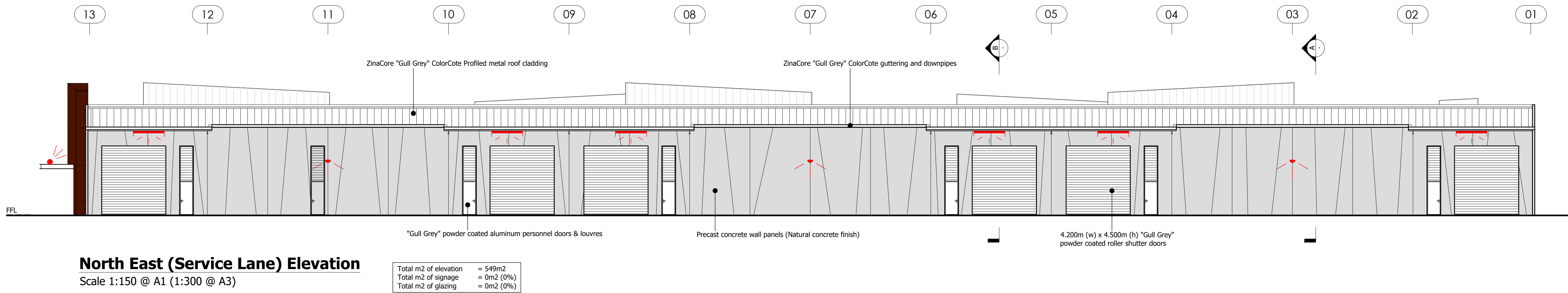
South West (Ballantyne Rd) Elevation
Scale 1:150 @ A1 (1:300 @ A3)



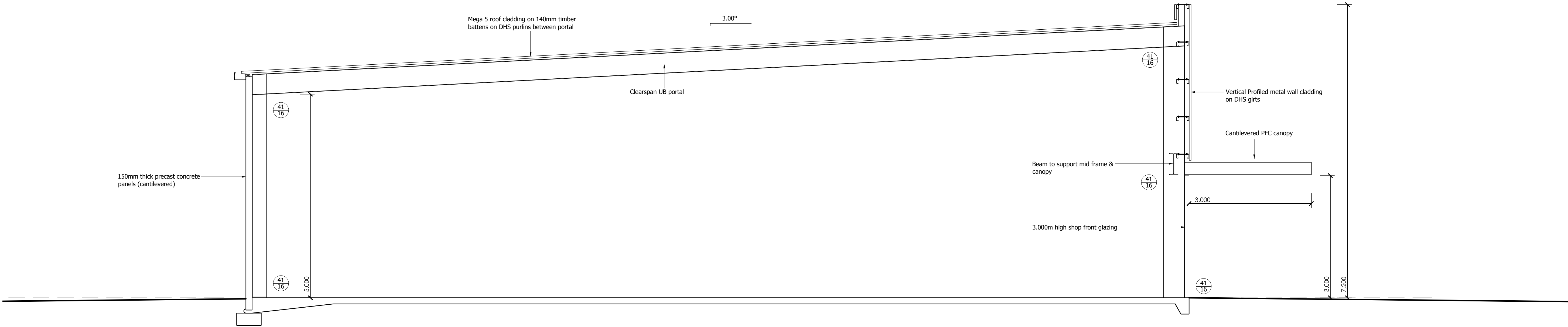
North West Elevation
Scale 1:150 @ A1 (1:300 @ A3)



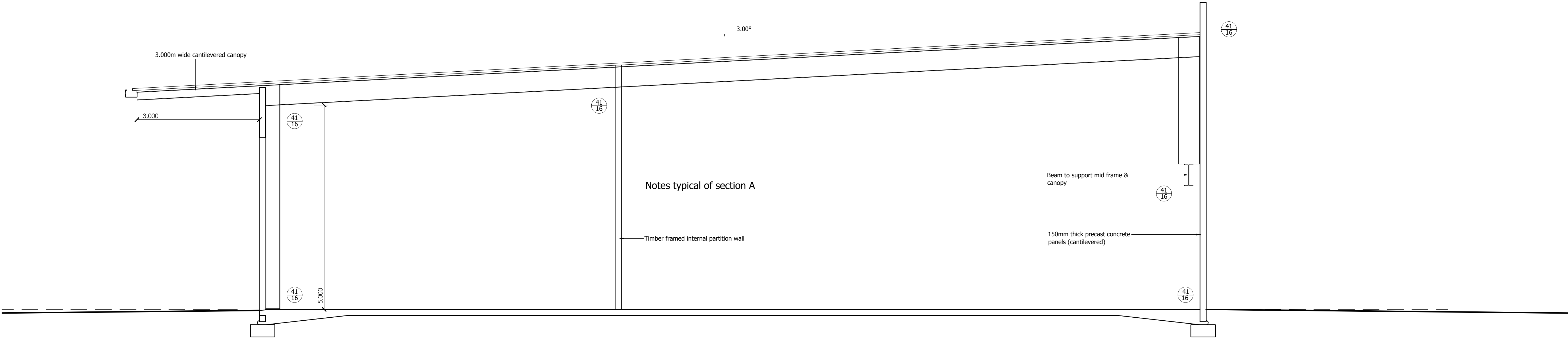
South East Elevation
Scale 1:150 @ A1 (1:300 @ A3)



North East (Service Lane) Elevation
Scale 1:150 @ A1 (1:300 @ A3)



Section A
Scale 1:50 @ A1



Section B
Scale 1:50 @ A1

date	revisions

sheet title: SectionsA & B		Contract No. 021 377 003
Date created: 31.03.17	Dwg No. 5	