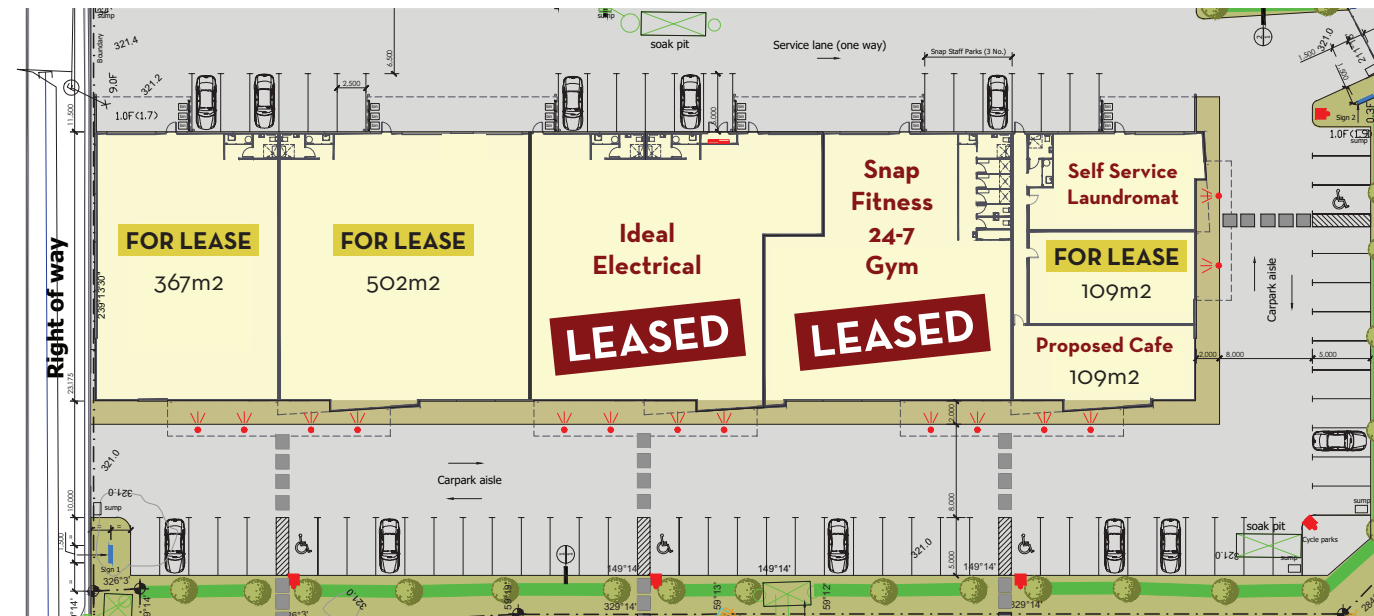


# THREE PARKS, WANAKA FOR LEASE

# BUSINESS UNITS UNDER CONSTRUCTION



Located at the entrance to Three Parks Development fronting onto Ballantyne Road.

Units from 109m<sup>2</sup> to 502m<sup>2</sup>

**69 ON-SITE CAR PARKS**

These high profile units are under construction now and can be fitted out to suit your business.



FOR MORE INFORMATION CONTACT:



**Mark Pittaway**  
Commercial Sales &  
Marketing Manager, 021 721 119,  
[mark@willowridge.co.nz](mailto:mark@willowridge.co.nz)

**SUITABLE FOR:**

- Trade Showrooms
- Offices & Commercial
- Trade & Service Businesses
- Wholesaling
- Cafe Opportunity

[www.willowridge.co.nz](http://www.willowridge.co.nz)  
**WILLOWRIDGE**  
DEVELOPMENTS LTD